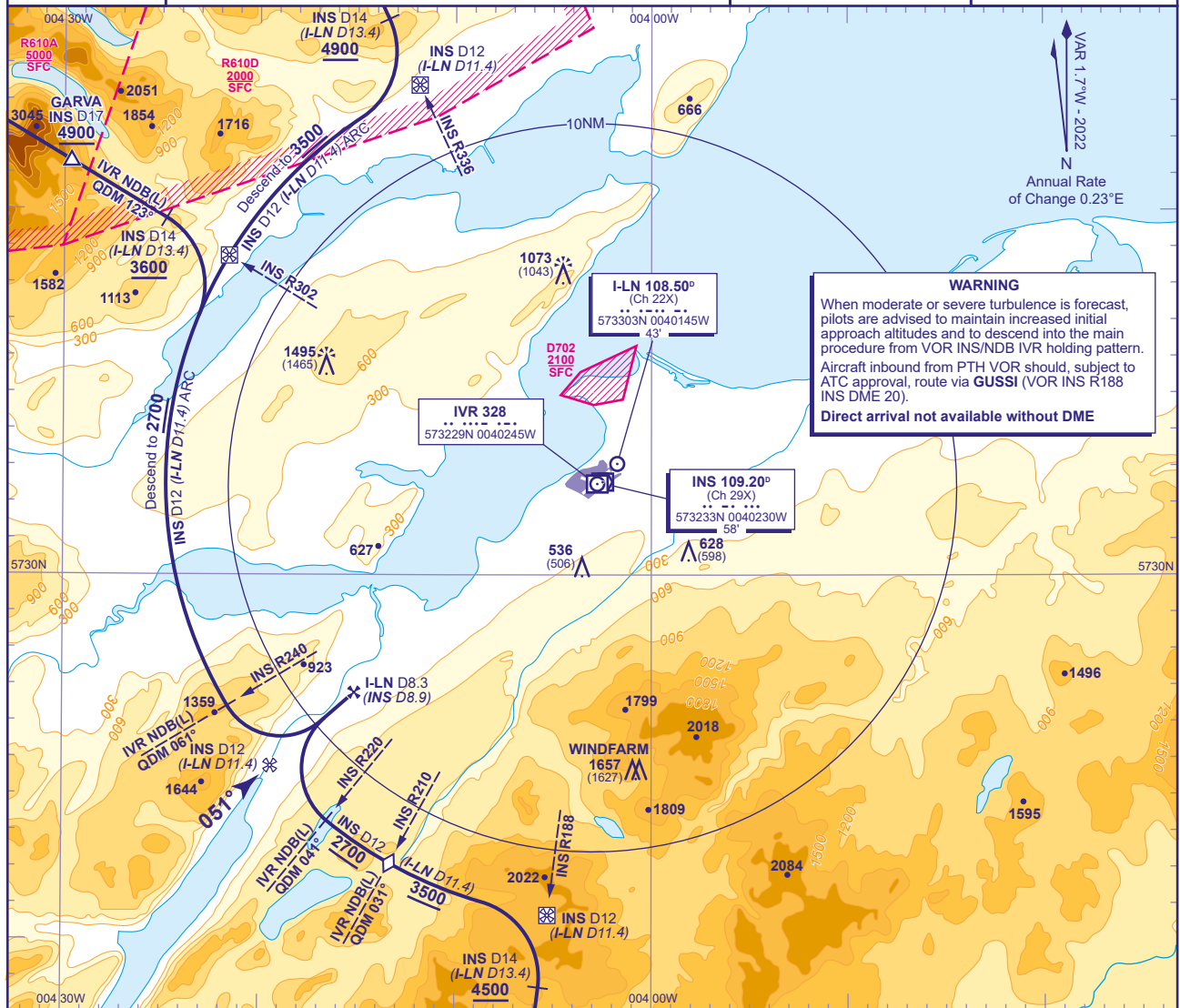


(ACFT CAT A,B)

TRANSITION ALTITUDE  
**3000**



Arrival from the south on VOR INS R188 (QDM 009°) **not below 5800**. Request ATC approval for DME arc arrival when within INS DME 40. After passing INS DME 25, with ATC approval, descend **not below 5000**, and after passing **GUSSE** (INS DME 20) descend **not below 4500**. From INS DME 14 (I-LN DME 13.4) turn left to establish on INS DME 12 (I-LN DME 11.4) arc clockwise. When established, descend along the arc **not below 3500**. After crossing step down VOR INS R210 (IVR NDB(L) QDM 031°), continue descent to **2700**(2670), then from lead VOR INS R220 (IVR NDB(L) QDM 041°) turn right onto localizer. From FAF I-LN DME 8.3 (INS DME 8.9) at **2700**(2670), continue with ILS/LOC/DME final approach.

Arrival on N560 **not below 5000**. Request ATC approval for DME arc arrival when within INS DME 40. When approved, after passing **BONBY** (INS DME 23) descend **not below 4900**. Establish on INS R336 (QDM 157°) from INS DME 14 (I-LN DME 13.4) turn right to establish on INS DME 12 (I-LN DME 11.4) arc anticlockwise. When established, descend along the arc **not below 3500**. After crossing INS R302 (IVR NDB(L) QDM 123°), continue descent to **2700**(2670), then from lead VOR INS R240 (IVR NDB(L) QDM 061°) turn left onto localizer. From FAF I-LN DME 8.3 (INS DME 8.9) at **2700**(2670), continue with ILS/LOC/DME final approach.

Arrival on VOR INS R302 (IVR NDB(L) QDM 123°) **not below 5200**. Request ATC approval for DME arc arrival when within INS DME 40. After passing INS DME 25, with ATC approval, descend **not below 4900**, and after passing **GARVA** (INS DME 17) descend **not below 3600**. From INS DME 14 (I-LN DME 13.4) turn right to establish on INS DME 12 (I-LN DME 11.4) arc anticlockwise. When established continue descent to **2700**(2670), then from lead VOR INS R240 (IVR NDB(L) QDM 061°) turn left onto localizer. From FAF I-LN DME 8.3 (INS DME 8.9) at **2700**(2670), continue with ILS/L OC/DME final approach.

AD 2-EGPE-8-7